



**Model MJ-9000V**

**Model MJ-9000VG (Greystoke Model)**

# **Installation Manual**

**Website: <http://www.MajesticAppliances.com>**

**Check this website under Models for the most up-to-date manual. In all situations, the most current manual governs in questions of use and warranty**

# Welcome...



Congratulations. Welcome to the growing family of Majestic™ Appliance owners. By choosing a Majestic Appliances model as your laundry appliance you not only found the best in reliable technology, but above all you have found a faithful and untiring convenience appliance.

Your machine is strong, reliable and long lasting. All those qualities which have made the Majestic™ trademark famous the world over.

Above all, Majestic products are easy to use. Read this owner's manual carefully since it contains all the instruction for safe installation, use and maintenance. Remember to keep your owner's manual in a safe place so that you can refer to it whenever you need to.

For additional information and contact with the our staff, we invite you to visit our web site.

**<http://www.MajesticAppliances.com>**

**(Majestic Appliances has made it easy to register your appliance online. Just go to our website and click on "Online Registration". Registering your product is essential to receive warranty service.)**

We offer a wide range of appliance products, some of which might suit your needs. We also offer our revolutionary MajesticAppliances.TV web option, where you can view orientation movies on the web as well as comments from other users and frequently asked questions. Welcome to our Family!

---

## For Your Records

Thank you for purchasing our Majestic Appliances Product. This manual will guide you in getting the most productive use of your appliance purchase.

Remember to record you Model and Serial Number. **They are on a label on the back of the machine or inside the door.**

\_\_\_\_\_

Model Number

\_\_\_\_\_

Serial Number

\_\_\_\_\_

Date of Purchase

Staple your receipt to your manual. **YOU WILL NEED IT TO OBTAIN WARRANTY SERVICE!**

# Installing/Removing Getting things ready to install your appliance

**Unpacking, Inspecting, Electricity, Closets/Alcoves,  
Plumbing, Venting**

## Unpacking



- Check the packing box for external damage. It is your responsibility to register any damage with the freight company delivering the product.
- Remove the strapping, then slide the cardboard surround off the machine. Remove the foam protecting material and the plastic bag.
- Write down the serial number from the box or the back of the machine.
- Destroy the carton, plastic bags and foam parts after appliance has been unpacked.
- Children should never be left alone or unattended in the area where appliances being unpacked.
- If you have any doubts, do not use the appliance and call on a qualified technician.



**OWNER RESPONSIBLE  
FOR DAMAGE RESULTING  
FROM TIPPING MACHINE  
AFTER REMOVING  
SHIPPING BOLTS. AVOID  
TIPPING MACHINE  
FORWARD AFTER  
SHIPPING BOLTS ARE  
REMOVED**

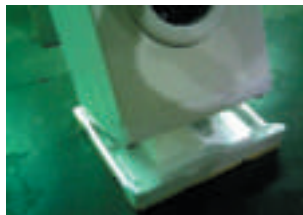
## REMOVING THE FOAM DRUM SUPPORT



## REPLACING THE METAL BOTTOM PAN.

**EXTRA CARE HAS BEEN TAKEN TO PREVENT SHIPPING  
DAMAGE. MAJESTIC IS THE ONLY COMPANY WHO SHIPS THIER  
APPLIANCES WITH A DRUM SUPPORT TO REDUCE TRANSIT  
DAMAGE. THE FOAM DRUM SUPPORT MUST BE REMOVED. HERE  
WE DEMONSTRATE HOW TO ACCOMPLISH THIS.**

**SHIPPING  
BOLTS MUST  
REMAIN IN  
MACHINE  
DURING THIS  
PROCESS!**



Carefully tip the unit from front to back making sure it can't tip all the way over.



Remove the foam drum support.



With the unit tipped back, loosen the leveling back, loosen the leveling legs a few turns.



Tip the unit the other direction from the back and remove the leveling legs totally



Slide the bottom pan so that the front slots in the pan fit over the feet of the leveling legs.



Replace the rear leveling legs and tighten them down securely.



Go to the front of the machine and retighten the leveling legs and you are done.

# REMOVING THE FOAM DRUM SUPPORT REPLACING THE METAL BOTTOM PAN.



**WARNING!!! IN ORDER TO REMOVE THE FOAM DRUM SUPPORT AND REPLACE THE METAL BOTTOM PAN, THE BOTTOM OF THE MACHINE MUST BE ACCESSED. SHIPPING BOLTS MUST REMAIN IN THE APPLIANCE WHILE ACCOMPLISHING THIS STEP IN THE PREPARATION PHASE OF THE INSTALLATION.**



## Inspecting **WHEN TO REMOVE SHIPPING BOLTS!**

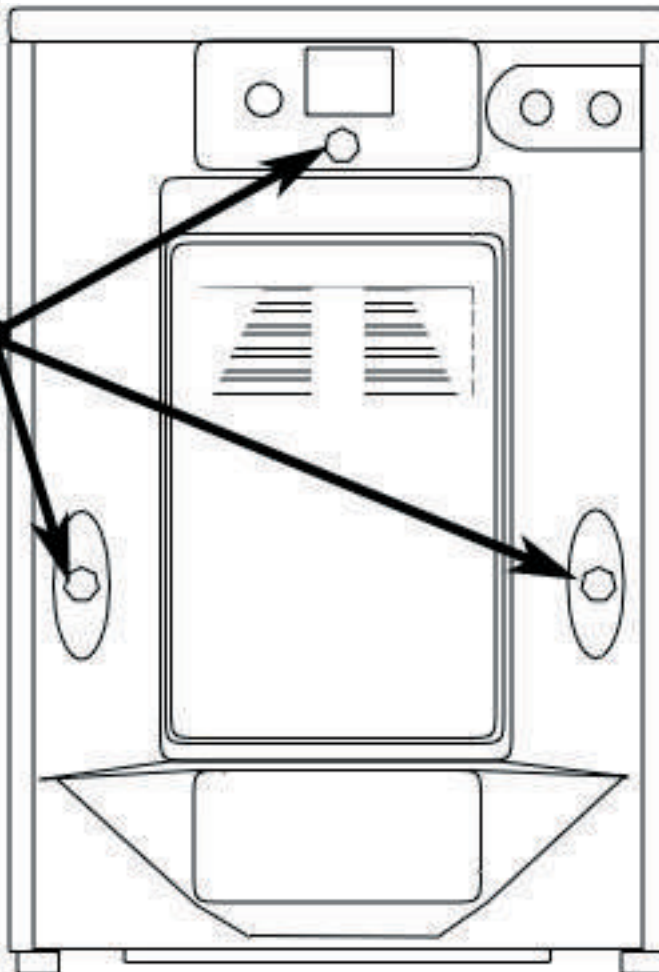


**WARNING!!! TIPPING THE MACHINE TO POSITION IT FOR USE MUST BE DONE WITH THE SHIPPING BOLTS STILL IN THE MACHINE!**

**TIPPING THE MACHINE WITHOUT SHIPPING BOLTS, CAN CAUSE THE INNER DRUM TO IMPACT OTHER INTERNAL PARTS, THUS DAMAGING THEM. POSITION THE MACHINE AS CLOSE AS POSSIBLE TO IT'S FINAL POSITION AND THEN REMOVE SHIPPING BOLTS.**

**SHIPPING BOLTS**

**ATTENTION: DO NOT TAKE OUT SHIPPING BOLTS UNTIL MACHINE IS POSITIONED WITHIN A FEW INCHES OF ITS FINAL INSTALLATION POINT. TIPPING THE UNIT OR MOVING IT WITHOUT SHIPPING BOLTS WILL VOID WARRANTY.**



✓ **INSPECT CONTENTS**

- [ ] Owners Manual
- [ ] Brass Pressure Regulators
- [ ] (Must be installed on hot and cold water inlet. Failure to do so can damage the internal components and cause water damage for which the installer/owner will be responsible!)
- [ ] Warranty Registration Card
- [ ] Majestic Literature
- [ ] Hoses have washers in both ends.



Brass Pressure Regulators installed on back of appliance.

# Installing/Removing

## Getting things ready to install your appliance (continued)

### Electricity



Make sure that the voltage and frequency available correspond with the values stated on the data plate located at the back of the machine and that the electric system is dimensioned to withstand the maximum current shown on the data plate. If the socket the machine is connected to does not correspond with the plug, replace the plug with a suitable one and avoid using adapters or shunts since they could cause over heating and burn out.

#### Grounding

This appliance must be grounded. In the event of malfunction or breakdown, grounding will reduce the risk of electric shock by providing a path of least resistance for electric current. This appliance is equipped with a cord having an equipment-grounding conductor and a grounding plug. The plug must be plugged into an appropriate outlet that is properly installed and grounded in accordance with all local codes and ordinances.

**WARNING-** Improper connection of the equipment-grounding conductor can result in a risk of electric shock. Check with a qualified or service representative or personnel if you are in doubt as to whether the appliance is properly grounded.

Do not modify the plug provided with the appliance: if it will not fit the outlet, have a proper outlet installed by a qualified electrician.

#### Electrical Specifications:

**Voltage/Amperage - 115V, 12 Amp, 60 Hz 3 Prong plug attached to the appliance in the factory**

**Circuit/Protection - 3 wires single phase, 120V, 60 Hz, AC separate 15 amp circuit or greater.**

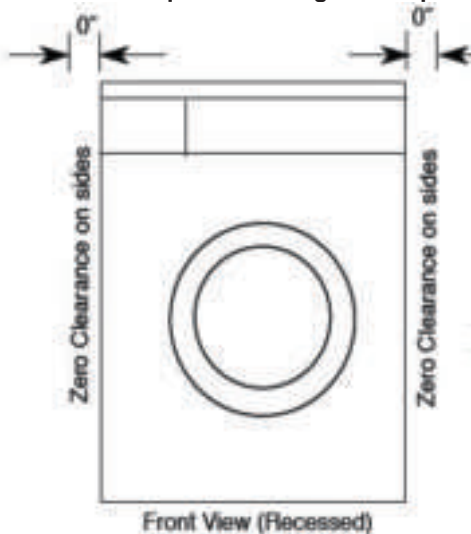
## Recessed, Closet and Alcove Installations



This appliance may be installed in a recessed area, closet or alcove. All measurements are in inches.

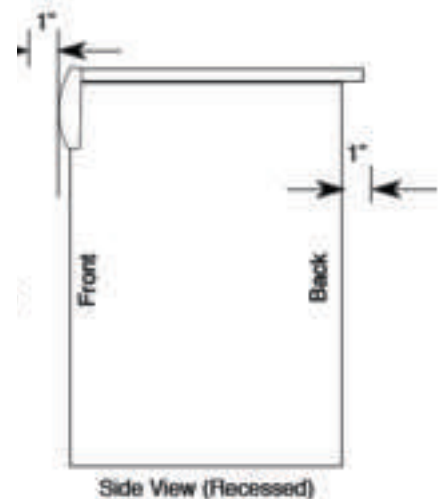
- If the appliance is to be installed in a closet with zero clearance on the side of the appliance, a total of 12 square inches of free air space movement to the back of the unit must be allowed into the closet.
- If a door is to be installed that potentially encloses the unit while running, the door must allow for a minimum of 20 square inches of free air movement. There must also be a 1" space from the front of the unit to the closed door and 1" from the back of the unit to the wall. Additional spacing should be considered for easy installation, servicing, removal and compliance with applicable local, state and federal codes.
- The floor must be able to support at least 280 lbs and a surface that is solid and level. If machine is to be placed in cabinet, up off the floor, it may be necessary to secure the drum with a tether to prevent excessive drum movement. Please call Majestic Appliances for more information.
- Installations in RV's or Marine pleasure craft suggest that the machine might best be installed midships in the boat, or over the axles of the RV where movement is at a minimum.

**Adequate blocking should prevent extreme movement when installed in an RV or Marine pleasure craft.**

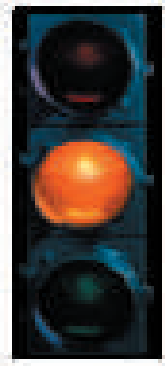


If the appliance is to be installed in a closet, the installation must be completed by a qualified person or service representative.

Additional clearances for floor, wall or door moldings may be required.



# Installing/Removing Getting things ready to install your appliance (continued) Plumbing - Water, Drains



## WATER CONNECTION

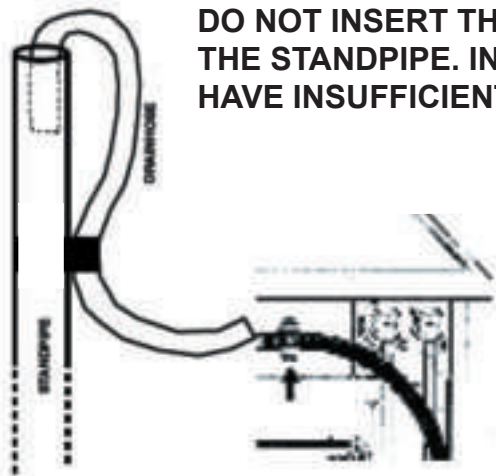
1. This appliance can be used with either hot/cold or cold/cold connections.
2. The hoses supplied have either a straight end or an elbow end. The elbow end is meant to connect to the washer. Be sure to connect the hot hose to the hot side of the appliance itself, the cold side to the cold connection. (See picture) The straight end to the 3/4" BSP standard hose bib thread.
3. **MAKE SURE WASHERS ARE INSTALLED IN EACH END OF THE SUPPLY HOSES.**
4. Ensure that water connections are free from debris or sediment.
6. **BRASS PRESSURE REDUCERS MUST BE INSTALLED TO PROTECT COMPONENTS INSIDE THE APPLIANCE. IMPORTANT ! CHECK THREADS ON THE MACHINE, THE BRASS PRESSURE REDUCERS AND THE SUPPLY HOSES TO ENSURE THEY ARE CLEAN. DO NOT USE EXCESSIVE FORCES. TIGHTEN BY HAND. DO NOT USE POWER TOOLS.**

Brass pressure reducers and elbow ends of supply hoses.



## Connection of the drain hose to standpipe

- Outlet end of drain hose (See figure 2) must be at least 20" above bottom of washer. Do NOT block top of standpipe closed with tape or other materials. An air break must be provided at the standpipe to avoid siphoning.
- Connect the drain hose to a standpipe (with internal diameter of at least 3.2 cm or 1 1/4" min. diameter) with a minimum carry away volume of 7 gallons. The top of the standpipe must be 20" minimum from the bottom of the appliance. Place drain hose for drainage into a sink tub or standpipe, ensuring that there are no kinks or bends. The free end must be at a height of 80 cm (31 1/2") from the floor, the hose must be fixed in the appropriate hook on the upper part of the back panel (fig.4)



**DO NOT INSERT THE END OF THE DRAIN HOSE MORE THAN 6" INTO THE STANDPIPE. INSERTING MORE MAY CAUSE THE APPLIANCES TO HAVE INSUFFICIENT DRAINAGE.**

## CORRECT LEVELING OF UNIT IS ESSENTIAL

It is important for the machine to be perfectly level. The angle of inclination on the work surface must not be more than 2 degrees. For this reason the machine is fitted with adjustable feet used for leveling the machine before use. In the case of carpeted flooring, remember to check that the ventilation in the support area is not plugged.



## Exhaust Duct Installation

- Check that all ducting is lint free. Secure ducting with clamps or metal tape.
- The exhaust duct must end with an approved exhaust vent hood with swing out dampers or appropriate louvers.
- Flex or rigid metallic ducting is recommended.
- Exhaust duct should be short and straight and slope downwards and away from the appliance. Long exhaust duct runs can increase drying time and collect lint.

**IMPORTANT! THE EXHAUST DUCT SHOULD NOT BE INSERTED INTO A CHIMNEY WALL, CEILING OR CONCEALED SPACE OR STRUCTURE.**

